



COMBINATION NIPPLES

LONG SHANK- ZINC PLATED STEEL
& SS 316

FEATURES & APPLICATIONS:

• **General Uses:**

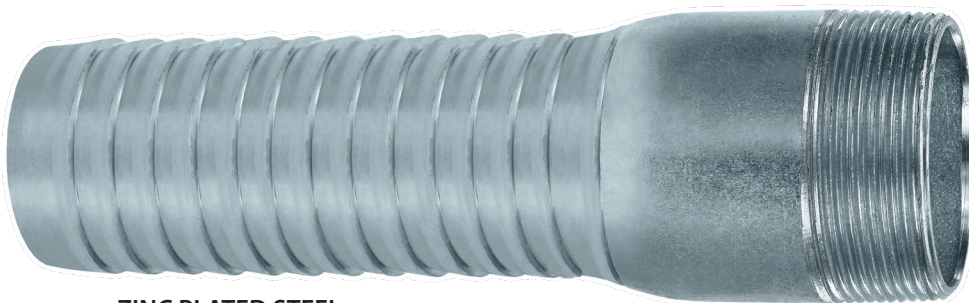
Working pressures may vary with type and clamping system used to install couplings.

Combination Nipples are recommended for low pressure discharge and suction service for compatible liquids. NOT for compressible products such as Air, Nitrogen and Steam.

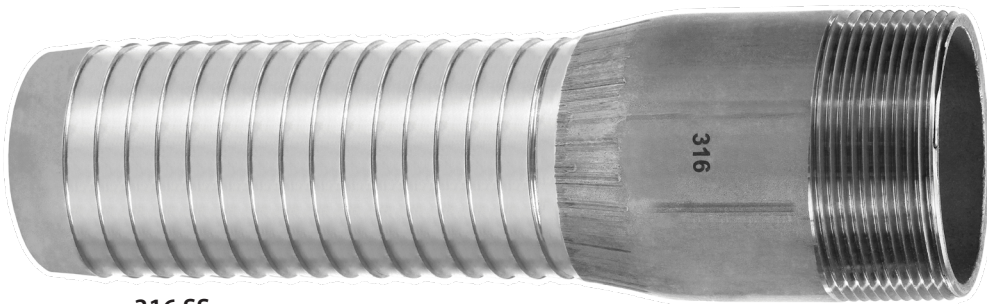
*All blank end & grooved combination nipples are made using Schedule 40 pipe.

Seal Fast Crimp Combination Nipples are to be used with Seal Fast Ferrules and Crimp Sleeves. They are designed with an Interlock System which allows the Ferrule to be permanently attached to the coupling.

WORKING PRESSURE 200 PSI



ZINC PLATED STEEL

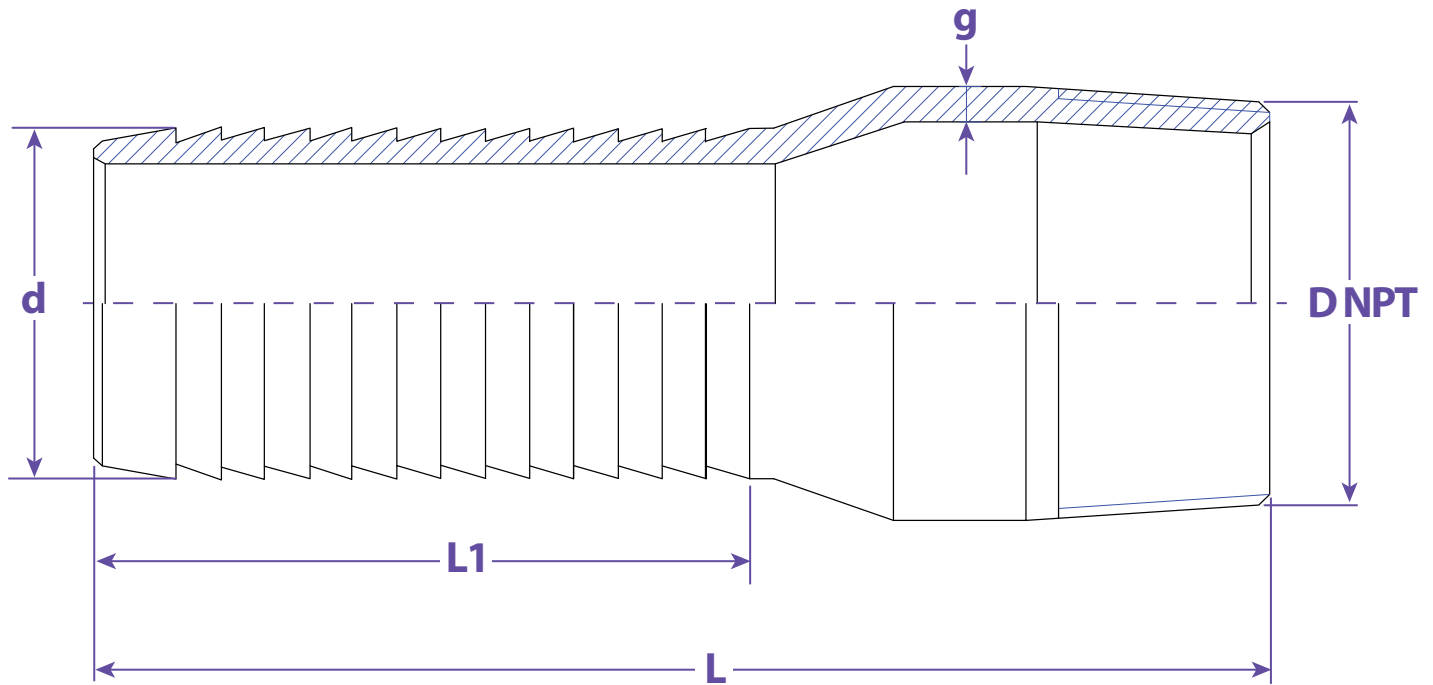


316 SS

ZINC PLATED STEEL & STAINLESS 316

SIZE	Zinc Plated Steel	316 SS #
1-1/4"	SF125LSP	SF125LSS6
1-1/2"	SF150LSP	SF150LSS6
2"	SF200LSP	SF200LSS6
2-1/2"	SF300LSP	SF300LSS6
3"	SF400LSP	SF400LSS6
4"	SF600LSP	SF600LSS6

Information contained on this page is for general information purposes only. Seal Fast Inc. assumes no responsibility for errors or omissions for this product.



Dimensions					
D	L	L1	d	g	Part #
1-1/4"	6.3740	3.7402	1.2795	0.1260	SF125xxxx
1-1/2"	6.3740	3.7402	1.5315	0.1260	SF150xxxx
2"	8.0000	4.9606	2.0315	0.1260	SF200xxxx
2-1/2"	8.0000	4.9606	2.5315	0.1575	SF250xxxx
3"	8.3740	4.9606	3.0315	0.1575	SF300xxxx
4"	8.3740	4.9606	4.0315	0.1575	SF400xxxx

TITLE COMBINATION NIPPLES - LONG SHANK

DISCLAIMER

All drawings and specifications are subject to change without notice. Drawings represent general dimensions of our products. Seal Fast cannot guarantee the dimensions of the part will exactly match those in the drawing. This drawing is the property of Seal Fast Inc. Copying or reproduction of this drawing is expressly prohibited.

MATERIAL

SFxxxLSP Carbon Steel
SFxxxLSS Stainless Tube 316
SFxxxLSS6 Stainless Tube 316

DRAWING NOT TO SCALE

PART # SF...LSP, LSS, LSS6

